

**AGENDA**  
**COUNCIL COMMITTEE MEETING**  
**MUNICIPAL DISTRICT OF PINCHER CREEK**  
June 8, 2021  
**via GoToMeeting**  
**9:00 am**

1. Approval of Agenda
2. Delegation: 9:00 Cabin Ridge Coal
3. Closed Session
  - a) 2020 Snake Trail Fire – FOIP Sec. 17
  - b) 2020 Outstanding Property Tax – FOIP Sec. 17
  - c) Beaver Mines Project Update – FOIP Section 17
  - d) Transfer Station Discussion – Post Joint Council Recap – FOIP Sec. 17
  - e) Emergency Services Mediation Update – FOIP Sec. 17
4. Adjournment

# Cabin Ridge Update

Presentation to MD of Pincher Creek Council

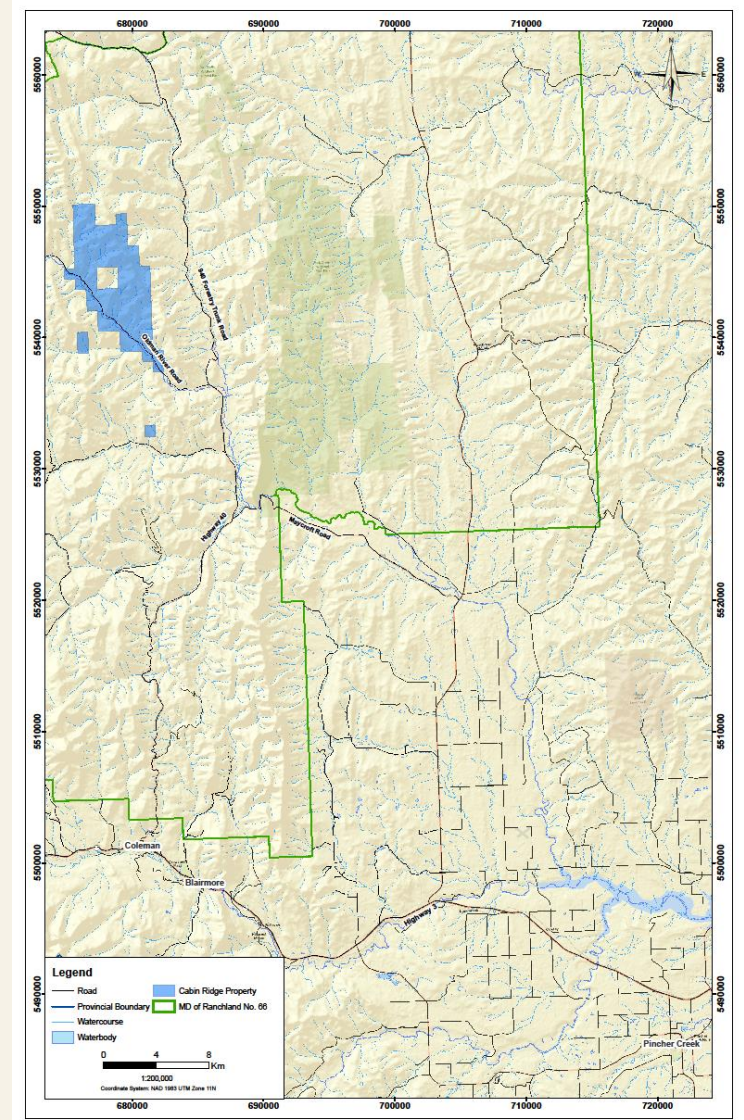
June 8, 2021





# ABOUT CABIN RIDGE

- Privately-owned exploration and development company headquartered in Calgary
- Controlled and fully funded by the Warburton Group, private investment group based in Perth, Australia
- Project Details:
  - On traditional territory of Treaty 7 First Nations
  - Approximately 50 km north of Coleman, Alberta
  - 4678 Ha site
  - In the exploration phase – no decision on a project
  - Coal exploration began in 2020
  - Conducting Preliminary Economic Assessment (PEA) to determine size and nature of the resource
  - Results to date are very encouraging and likely we have an economic project



# MANAGEMENT TEAM

Canadian management team supported by an experienced Board

- Cabin Ridge has built a strong, experienced and locally based management team as well as having committed significant investment to exploring the development of its project interests, adopting industry best practices under the stewardship of its experienced board of directors.
- Our Senior Management team:



**Bradley Johnston**

Chief Development Officer



**Linda Jefferson**

Director, Indigenous, Community and  
Government Relations



**Patrick Landry**

Director, Engineering



**Margwyn Zacaruk**

Manager, Environmental Affairs

# OUR PRINCIPLES

A good neighbour committed to the Alberta community

We have developed principles that will guide all our activity in the following areas:

## Environment

- Climate Change, Air Emissions, Water Stewardship, Waste, Biodiversity, Reclamation and Closure.

## Social

- Health and Safety, Diversity and Inclusion, Human Rights, Indigenous Peoples, Communities and Stakeholders.

## Governance

- Business Ethics, Code of Conduct, Compliance and Transparency, Business Resiliency.

**SOCIAL**

**Health & Safety**  
We value the health, safety and well-being of people above all else, including that of our fellow employees, contractors, and surrounding communities. Our goal is to ensure everyone gets home safely, always.

**Diversity & Inclusion**  
We value diversity and treat everyone with respect. We believe in fostering a diverse, inclusive, and safe workplace, free from harassment, bullying and discrimination.

**Human Rights**  
We acknowledge that our activities, and those of our partner businesses, have the potential to impact human rights. We commit to operating with the utmost respect of human rights, including the rights of Indigenous Peoples as set out in the United Nations Declaration on the Rights of Indigenous Peoples.

**Indigenous Peoples**  
We recognize and respect Indigenous rights and the importance of reconciliation with Indigenous Peoples. We will meaningfully consult Indigenous communities in a respectful, open, and transparent fashion. Indigenous communities should participate in our business.

**Communities & Stakeholders**  
We believe in being a good neighbour and treating everyone with respect. Our communication will always be honest, and transparent as we seek to address concerns and contribute positively to communities and projects through employment and contracting opportunities.

**GOVERNANCE**

**Business Ethics, Code of Conduct, Compliance & Transparency**  
We believe in honesty, transparency, and acting with integrity.

**CABINRIDGE**

**PRINCIPLES WE LIVE BY**

Strong principles lie at the core of every successful business, community, and relationship. At Cabin Ridge, we understand how important that is. That's why we are committed to stewardship and the responsible exploration and development of steelmaking coal. Our dedication is deeply grounded in clear principles, shaping every decision we make and guiding every action taken throughout a project's lifecycle – from the first exploratory steps to reclamation.

**WE ARE GUIDED BY OUR PRINCIPLES – IN EVERYTHING WE DO, NOW AND IN THE FUTURE**

**ENVIRONMENT**

**Climate Change**  
Climate change is a significant issue affecting our planet and communities. We have a role in helping address this global challenge, and are dedicated to managing our GHG emissions and carbon footprint through low emissions technology, energy efficiency, and reclamation.

**Air Emissions**  
We will strive to minimize dust and other emissions to protect the health of the environment and communities near our operations.

**Water Stewardship**  
Access to clean water is a basic human right and critical for maintaining healthy ecosystems. We will protect the watershed where we operate by minimizing water use and ensuring water that leaves our operations is clean and safe for people and aquatic life.

**Waste**  
We will work to minimize impacts from waste generated by our activities, such as safely storing and using waste rock in future reclaimed landscapes. We are committed to reducing, reusing, and recycling our non-mine waste as much as possible.

**Biodiversity, Reclamation & Closure**  
We are committed to preserving and promoting biodiversity, including protecting and avoiding high value areas and habitats. We believe responsible modern mining includes effectively managing biodiversity, reclamation, and closure. We will return lands to a healthy and productive state. We plan for closure at all stages and will progressively reclaim our mine site as we proceed.

**CABINRIDGE**

Cabin Ridge Project Limited is a privately-owned Alberta Corporation currently exploring steelmaking coal opportunities in Alberta.

# 2021 ACTIVITY UPDATE

- In April the Government of Alberta halted all coal exploration Category 2 lands until the coal consultation process is complete
  - Cabin Ridge's planned exploration program is halted, no drilling or construction activities.
  - Planned exploration spend was to be in the range of \$12 million, supporting 60-90 full time jobs.
- Continuing to engage with Indigenous groups, communities and stakeholders during the halt
  - Will be at the market and community events in Crowsnest Pass this spring and summer.
- Continuing with environmental baseline program
  - Not related to exploration, non-invasive and no permanent footprint.
  - Terrain and soils, vegetation and wetlands, wildlife, surface water, fish and fish habitat, and groundwater studies.
  - Information would be used in designing a potential future mine to reduce impacts and any future environmental impact assessment.



# ECONOMIC BENEFITS

## Producing steelmaking coal and opportunities

We are committed to ensuring employment and business opportunities for Indigenous groups and all Albertans. Should we move forward with a mine development, benefits to the region would be:

- Hundreds of direct and indirect employment opportunities
- Some of the highest industrial wages in Canada (\$123K annual average)
- Contracts available for local and Indigenous Peoples, businesses and suppliers
- Local, regional and corporate taxes
- Substantial investment in community and environmental initiatives
- Skills and training advancement
- Regional investment in infrastructure
- Enabling legacy remediation to be addressed

**CABINRIDGE**

### ECONOMIC BENEFITS OF STEELMAKING COAL

#### THE ADVANTAGES OF RESPONSIBLE MODERN MINING

Coal is more than just an energy source. It is one of the most crucial components in the manufacturing of high-quality steel, which is used in almost every sector of society. The local management team at Cabin Ridge has begun exploration programs to assess the potential of this resource in Alberta, working with Indigenous Peoples, communities and governments.

Our vision, should a project be viable, is to provide the world with this high-grade, steelmaking coal, while still delivering world-class safety, environmental and social responsibility, and enhanced opportunities for the area.

#### COAL MINING DOES MORE THAN PRODUCE STEEL – IT PRODUCES OPPORTUNITIES

Demand for high-quality steelmaking coal is increasing globally, and western Canada's mining sector plays a significant role in meeting this demand. In 2019, Canada produced 30 million tonnes<sup>1</sup> of steelmaking coal, 80%<sup>2</sup> of which was produced in British Columbia's Elk Valley alone. The economic impact of this is easy to see, and Alberta holds immense potential for future development.

Of course, the many economic benefits do not replace the need for responsible mining. Being a good neighbour is critical – and development in Alberta can be balanced with economic investment and job creation to establish positive impacts for all.

**16,500 jobs**

**In 2019, the mining sector contributed \$109 billion, or 5% of Canada's total nominal GDP.<sup>3</sup>**

**The industry's direct and indirect employment accounts for 719,000 jobs – that's 1 in every 26 jobs in Canada.<sup>4</sup>**

**In 2018, mining in British Columbia generated \$2.9 billion worth of economic activity for suppliers.<sup>5</sup>**

**Proportionally, the mining industry is the largest heavy industrial employer of Indigenous Peoples and currently provides over 16,500 jobs to community members.<sup>6</sup>**

**CABINRIDGE**

**Mining has provided prosperity for generations of Canadian families**

We are committed to ensuring the business opportunities for Indigenous Peoples. Should we move forward with a mine development, benefits to the region would be:

- Hundreds of direct and indirect employment opportunities
- Some of the highest industrial wages in Canada (\$123K annual average)<sup>5</sup>
- Contracts available for local businesses and suppliers
- Local, regional and corporate taxes
- Substantial investment in community and environmental initiatives

**CABINRIDGE**

Cabin Ridge Project Limited is a privately-owned Alberta company currently exploring steelmaking coal opportunities in the Elk Valley region of British Columbia.

1. Coal Association of Canada, Canadian Coal Production
2. British Columbia Coal Industry Overview 2020, British Columbia Ministry of Energy, Mines and Low Carbon Innovation
3. Facts & Figures 2020: The State of Canada's Mining Industry, The Mining Association of Canada
4. The Canadian Minerals and Metals Plan 2019, Canadian Mining Association
5. Facts & Figures 2019: The State of Canada's Mining Industry, The Mining Association of Canada
6. Facts & Figures 2019: The State of Canada's Mining Industry, The Mining Association of Canada

# NEED FOR STEEL

## Global demand on the rise

- Global demand for steel, and the coal needed to make it, is growing to support strong and emerging economies. By 2050, global steel use is expected to increase by 20% to meet the needs of our growing population.
- Steel is strong, durable, and essential for buildings and infrastructure, vehicles, appliances, and metal products.
- Approximately 770 kilograms of steelmaking coal is required to produce one tonne of steel. That translates to:



### PERSONAL RECREATION

Approx. **1.1 kilograms** of steelmaking coal is needed to build an average bicycle frame.



### TRANSPORTATION

On average, **700 kg** of steel is used per vehicle.



### ALTERNATIVE ENERGY

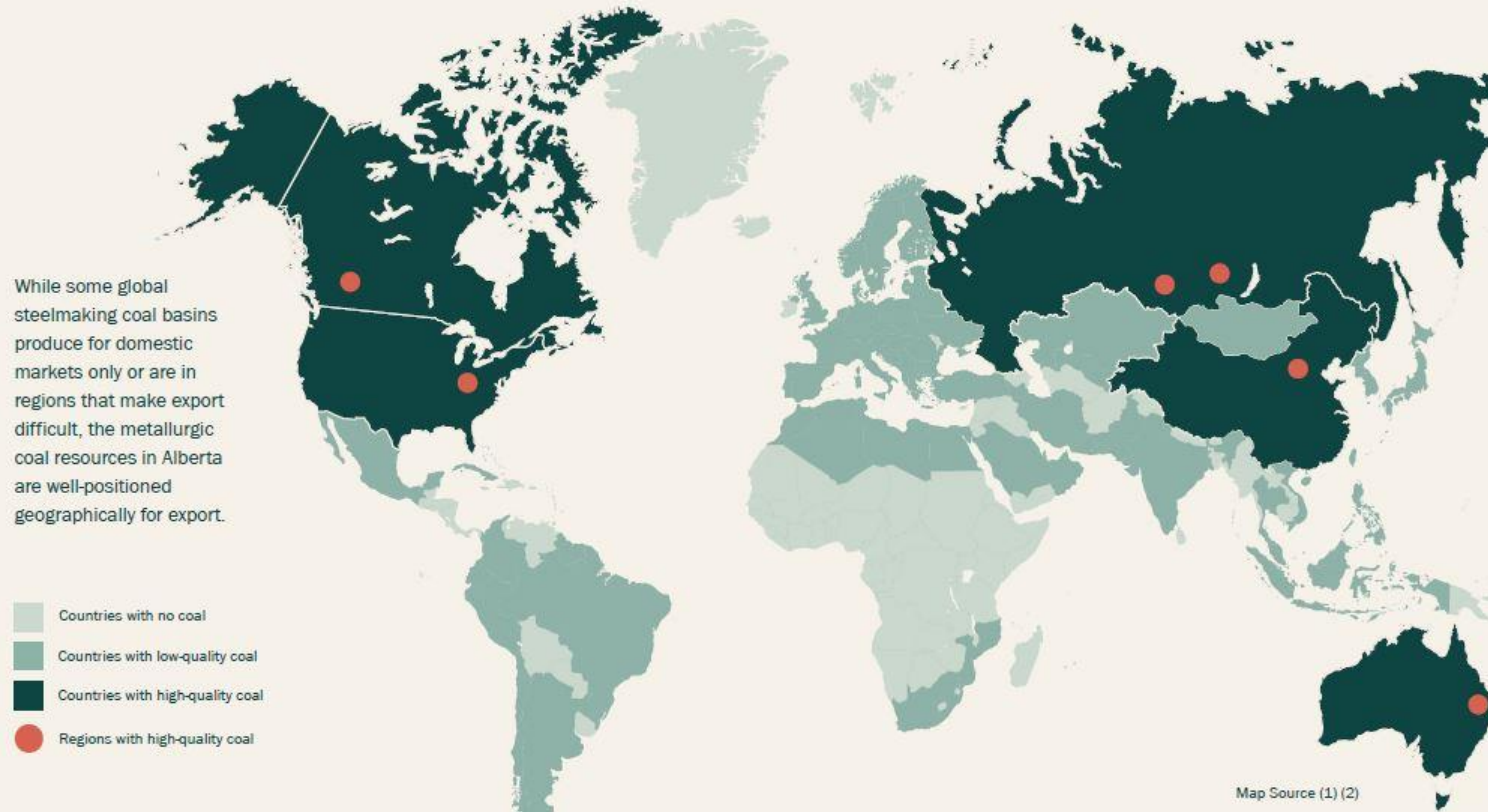
**107 tonnes** of steel coal is required to make the average wind turbine.



# STEELMAKING COAL

Made in Alberta, but changing the world

Because of its high quality and unique properties, Steelmaking coal is a scarce resource in the world.



# WHAT WE'VE HEARD

## Incorporating feedback into project design

We're committed to responsible exploration and development of steelmaking coal and are listening to our neighbours.

Some of the things we've heard are important:

- Indigenous rights and participation
- Land use and recreation
- Visual impacts
- Water quality, and in particular selenium
- Water allocations
- Reclamation certainty
- Employment and business opportunities



# ALBERTA COAL POLICY CONSULTATION

## Coal Policy Committee

- Government of Alberta seeking feedback from Albertans to inform the province's long-term approach to coal exploration and development.
- Government intends to develop a modern coal policy to protect areas Albertans cherish while allowing responsible resource development in appropriate places.
- Consultation is being lead by the Coal Policy Committee.
- Cabin Ridge believes that the Terms of Reference coupled with additional insight into technical matters will allow for a modern coal policy that protects natural areas and responsible coal development.



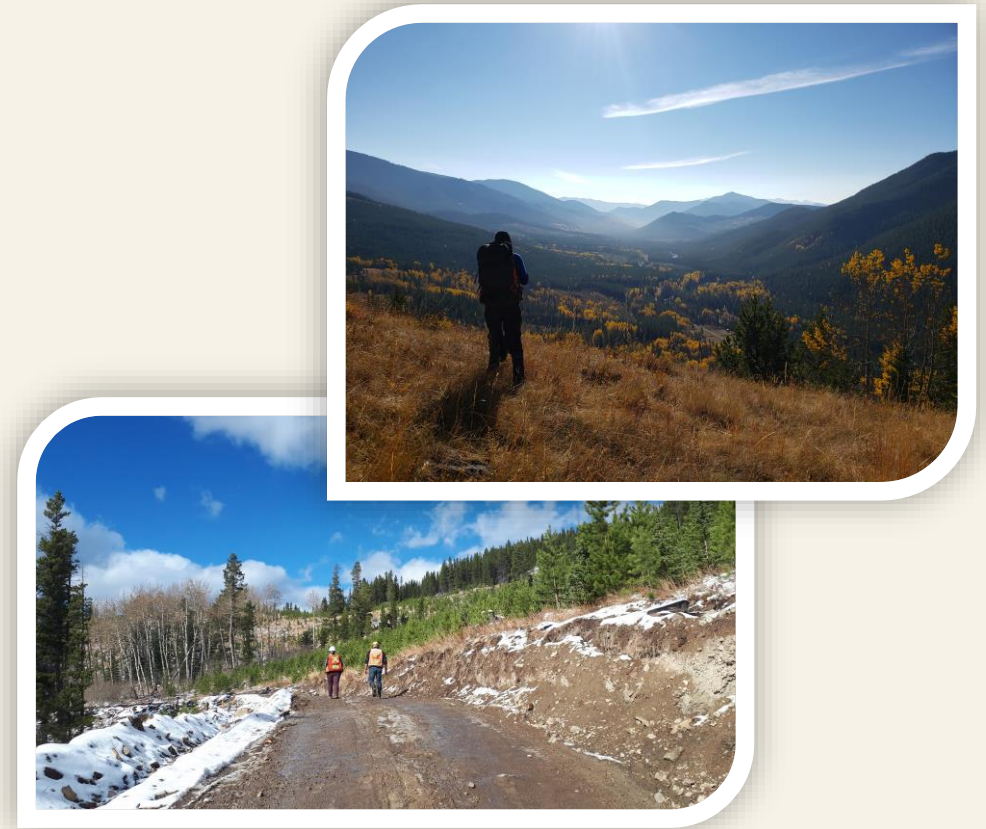
*“Cabin Ridge encourages all interested Albertans to let the Committee know their views on responsible coal development in Alberta”*



# COMMUNITY INPUT

We'd like to know your thoughts ...

- What are people in the community saying about mining?
- What does responsible mining look like to you?
  - How can it be balanced with other values and coexist with other land uses in the Eastern Slopes?
- How could mine development benefit people and businesses in the Crowsnest Pass and region?
- Any advice for us?



# Thank you

We look forward to discussing the Cabin Ridge project with you again

# KEY CONTACTS AND RESOURCES

Visit our website or contact us directly

- **Our Website:**

- We publish meaningful and accurate information on our website about what we are doing and how we plan to do it
- We invite you to take a look [www.cabinridgecoal.com](http://www.cabinridgecoal.com)

- **Our Key Contacts:**

At Cabin Ridge we are always willing to have a conversation so please contact us if you would like to discuss or to receive more information

- **Brad Johnston**, P. Eng.; Chief Development Officer ([brad.johnston@crproject.biz](mailto:brad.johnston@crproject.biz)) Tel: 403 880 3207
- **Linda Jefferson**, Director Indigenous, Community & Governmental Affairs ([linda.jefferson@crproject.biz](mailto:linda.jefferson@crproject.biz)) Tel: 403 874 3340

